

**General information for the Cabana range:**



Sliding table:  
moving top  
and butterfly  
inlay in  
middle.



Tops are solid acacia; finger joint allowed. wood is brushed - part of aging. Knots are desired.



Tops are solid acacia; finger joint allowed. wood is brushed - part of aging. Knots are desired.

1000148

Tops are solid acacia; finger joint allowed. wood is brushed - part of aging. Knots are desired.





Tops are solid acacai; finger joint allowed. wood is brushed - part of aging. Knots are desired.



Tops are solid acacai; finger joint allowed. wood is brushed - part of aging. Knots are desired.



1000148

Tops are solid acacia; finger joint allowed. wood is brushed - part of aging. Knots are desired.



Tops are solid acacia; finger joint allowed. wood is brushed - part of aging. Knots are desired.



Tops are solid acacia; finger joint allowed. wood is brushed - part of aging. Knots are desired.



Corpus are in MDF lacquered. Because of complicated finishing ( patina ) color differences will be more as what we are normally used.



Part of finishing.



Part of finishing.



Part of finishing.





Updeck  
hinges.



Drawer fronts  
are rattan.



Edges and  
corners are  
rounded off.



Edges and corners are rounded off.



Same agings as above on furniture are also on table legs.



Same agings as mentioned above are also on the plints.



On sides of furniture is made V groof and fake dowels.





Brushing on sides of top is horizontal.



Aging.



Aging.







Wine chest;  
tray on top is  
included in the  
item.



Aging table legs.



07478



Sliding tables have moving top ( and butter fly inlay in middle ).



Plastic drawer stops.



Sliding table.





Sliding tables have moving top and butterfly inlay in middle.



Sliding tables have moving top and butterfly inlay in middle.



Sliding tables have moving top and butterfly inlay in middle.



Sliding tables have moving top and butterfly inlay in middle.

© 2004



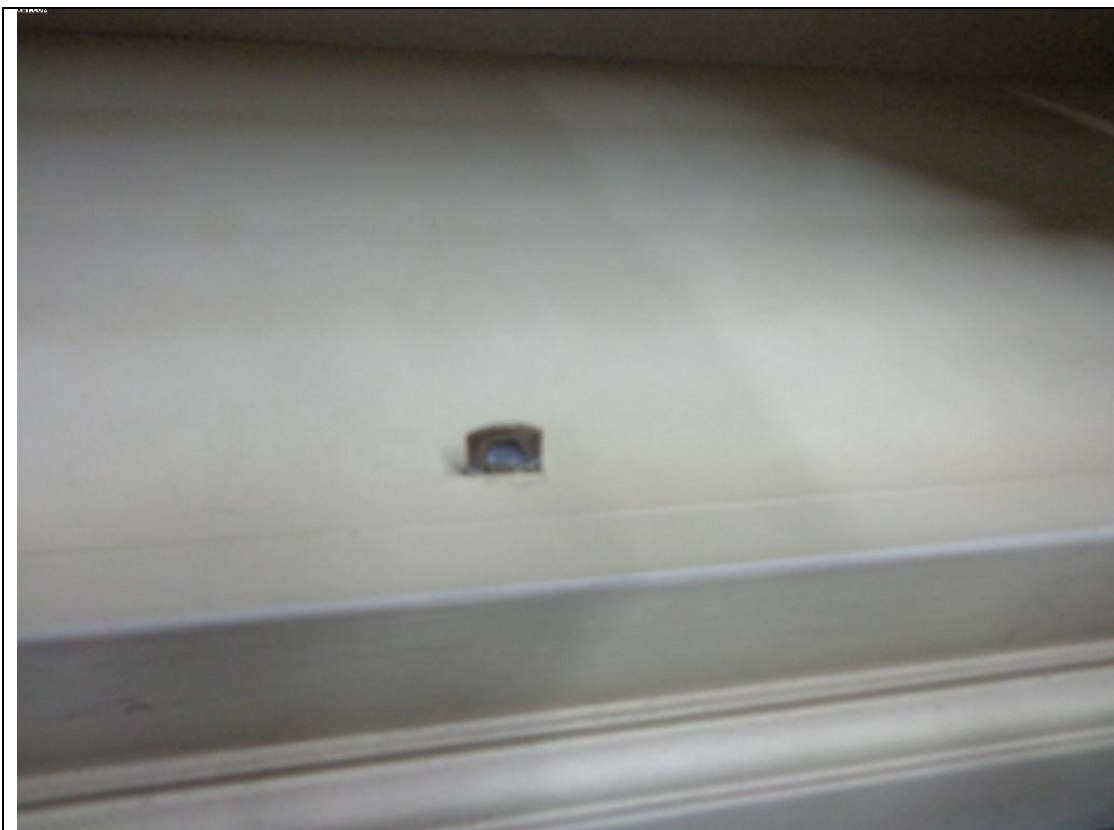
Sliding tables have moving top and butterfly inlay in middle.



Sliding tables have moving top and butterfly inlay in middle.



Sliding lock  
for doors.



Catcher for sliding lock.



Drawer front in rattan, metal grip.

Aging.





Drawer stops ( can be taken out).



Key



Instruction  
how to use  
inlay.

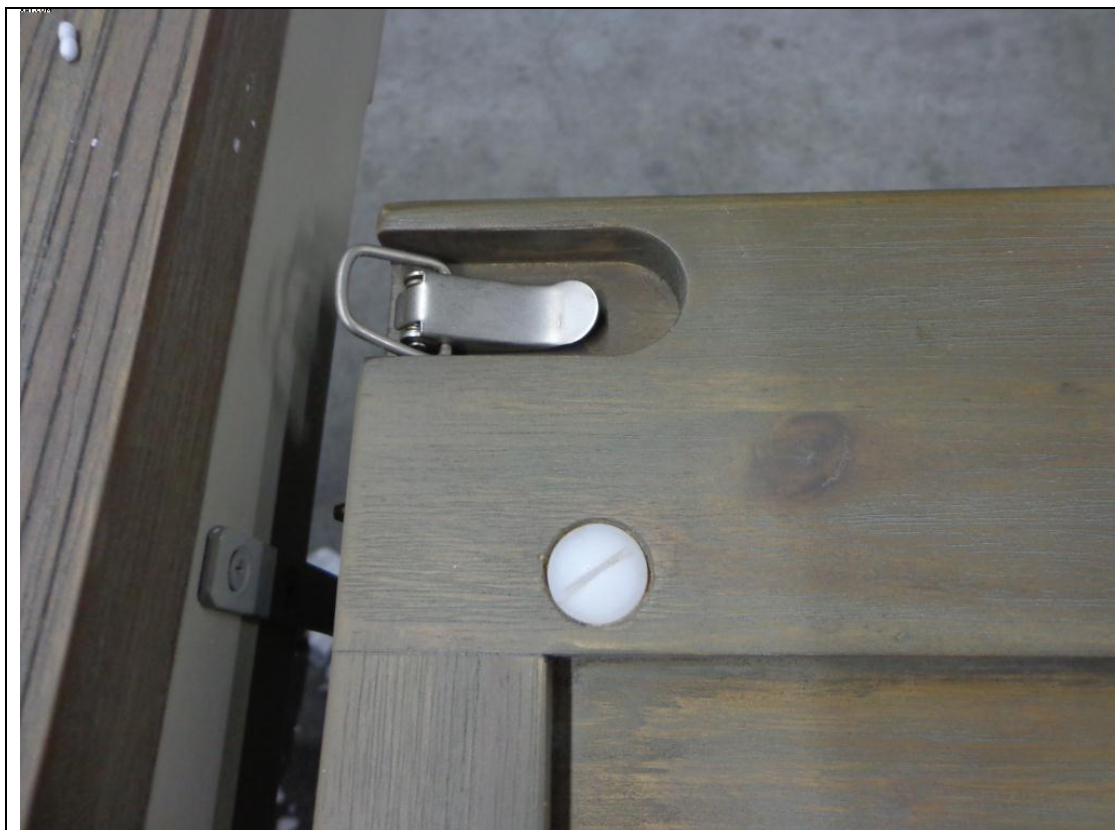


Grip on inlay.



Metal catchers to close inlay with top.

Metal hook behind which catcher has to hook.





Metal tumbling pin of inlay.



Metal support on which inlay can be stored.

Metal sliding rail



Assembly of legs with metal bolts.