

General information of the Deaumain range:

This piece of furniture was built according to traditional methods out of solid acacia wood and acacia veneer. Acacia is a highly durable hardwood that has long been valued in interior design. Its fine grain, flame design and varying colour shades give the furniture a solid, warm appearance. This piece of furniture has been given a distressed finish to create an 'aged' look; the sides and corners have been rounded and the surface slightly bowed and irregular, providing a handcrafted effect. The surface of the furniture is rough, giving it a more 'authentic' appearance. This treatment accentuates the unique character of the furniture.

Characteristics of the Deaumain range:

The wood used for your furniture is a unique product of nature that is processed following traditional methods in the country of origin after careful selection. Its characteristics are unique in every way; not one piece of wood is equal in shape, structure or colour. That is why variations in colour shade are inevitable within each piece of furniture. Wind cracks, hairline cracks, irregularities and the presence of big and small knots are the result of years of growth and originality. In time, the furniture will obtain a lighter and warmer colour through use and exposure to light. Colour differences in comparison to showroom models are therefore to be expected. Your piece of furniture has been finished with a lacquer. Furniture lacquer offers the best possible protection, accentuates the grain and gives the furniture a richer appearance.

Maintenance of the Deaumain range:

Use a soft cloth for normal maintenance of your furniture. If necessary, you can wipe your item of furniture down with a damp cloth. Rub the item of furniture dry after each cleaning session. If you wish to use a special maintenance product for lacquered furniture, consult your retailer first and follow his or her instructions.

Recommendations of the Deaumain range:

- Wood expands and shrinks in response to humidity changes, the so-called "working of the wood". In order to prevent excessive shrinkage and expansion, indoor air humidity should ideally be kept between 40% and 60%. During colder months in particular, indoor humidity decreases due to decreased ventilation and central heating. Therefore we advise you to hang water-filled reservoirs on your radiators.
- It is normal that through the working of wood discolored edges are visible on the side panels and tops. This is a direct result of the construction of the furniture and cannot be avoided. To fix/correct these discolored edges to the original color, you can contact the store to request a correction marker.
- To prevent unnecessary pressure on the connecting pieces of the furniture, place the furniture on an even surface.
- Do not place the furniture near a heat source or in direct sunlight.
- We advise against placing the furniture next to an air conditioning unit.
- When moving the furniture, it is advisable to empty it before lifting it. Dragging could damage both the furniture and the floor.
- We recommend you use table mats and coasters made of cork or felt under pans, mugs, coffee pots, etc. to prevent damage caused by spills. Do not use table mats or coasters made of plastic, rubber or similar materials that contain plasticizers as this may attack the finish (or lacquer).
- Any spills should be cleaned up immediately with a dry cloth or tissue until the surface is dry.
- To prevent discolouring, it is advisable to frequently move any surface decorations, especially during the first year.
- It is advisable to protect the surface of the furniture when writing, drawing etc. to prevent possible damage.
- To avoid possible damage to the floor, we advise putting plastic caps or felt on the legs of the furniture.
- It is possible that the characteristic smell of the wood may be noticeable for a while. The smell usually disappears after one or two weeks. Additional ventilation can speed up this process.
- Please note that our furniture is guaranteed for indoor household use only and is therefore not suitable for commercial use. All warranty claims are invalid if the furniture is used commercially or outdoors.
- Please clean your item of furniture with a clean, soft cloth before use. Be particularly thorough

when cleaning the edge of the table top in order to remove dust and/or paint remnants that might damage your chairs or clothing.

- We advise you NOT to push chairs up against the table. Leave some space between the table and chairs to avoid creating unsightly depressions or discoloration in the chair backs or armrests.
- Your furniture has been treated with a normal protective coating that does not detract from its natural appearance. If you require better/optimum protection for intensive daily use, we advise you to apply an extra layer of wood care product on the table tops before and during use. Your retailer stocks this product. Apply the product in accordance with the instructions.

Recommendations for chests of the Deaumont range

- If the chest doors are equipped with 'magnet catchers', they can usually be adjusted in order to facilitate opening the doors.
- We urgently recommend installing some type of 'fall' protection for all tall furniture for reasons of safety. This will prevent the furniture from tilting and/or falling forward. This can be done by installing 1 or 2 brackets above the furniture piece (available at any home improvement centre) by mounting them with a plug and screw of sufficient size onto the wall. Make sure to pre-drill the wood to prevent splitting.
- Standard weight indication (if needed): for equal weight (loads):
Maximum allowable weight for wood shelves is 20 kg.
Maximum allowable weight for glass shelves is 10 kg.

Maximum allowable weight per drawer is 10 kg.

Maintenance of the Deaumain range:

Use a soft cloth for normal maintenance of your furniture. If necessary, you can wipe your item of furniture down with a damp cloth. Rub the item of furniture dry after each cleaning session.

If you wish to use a special maintenance product for lacquered furniture, consult your retailer first and follow his or her instructions.

Recommendations of the Deaumain range:

- Wood expands and shrinks in response to humidity changes, the so-called "working of the wood". In order to prevent excessive shrinkage and expansion, indoor air humidity should ideally be kept between 40% and 60%. During colder months in particular, indoor humidity decreases due to decreased ventilation and central heating. Therefore we advise you to hang water-filled reservoirs on your radiators.
- It is normal that through the working of wood discolored edges are visible on the side panels and tops. This is a direct result of the construction of the furniture and cannot be avoided. To fix/correct these discolored edges to the original color, you can contact the store to request a correction marker.
- To prevent unnecessary pressure on the connecting pieces of the furniture, place the furniture on an even surface.
- Do not place the furniture near a heat source or in direct sunlight.
- We advise against placing the furniture next to an air conditioning unit.
- When moving the furniture, it is advisable to empty it before lifting it. Dragging could damage both the furniture and the floor.
- We recommend you use table mats and coasters made of cork or felt under pans, mugs, coffee pots, etc. to prevent damage caused by spills. Do not use table mats or coasters made of plastic, rubber or similar materials that contain plasticizers as this may attack the finish (or lacquer).
- Any spills should be cleaned up immediately with a dry cloth or tissue until the surface is dry.
- To prevent discolouring, it is advisable to frequently move any surface decorations, especially during the first year.
- It is advisable to protect the surface of the furniture when writing, drawing etc. to prevent possible damage.
- To avoid possible damage to the floor, we advise putting plastic caps or felt on the legs of the furniture.
- It is possible that the characteristic smell of the wood may be noticeable for a while. The smell usually disappears after one or two weeks. Additional ventilation can speed up this process.
- Please note that our furniture is guaranteed for indoor household use only and is therefore not suitable for commercial use. All warranty claims are invalid if the furniture is used commercially or outdoors.
- Please clean your item of furniture with a clean, soft cloth before use. Be particularly thorough when cleaning the edge of the table top in order to remove dust and/or paint remnants that might damage your chairs or clothing.
- We advise you NOT to push chairs up against the table. Leave some space between the table and chairs to avoid creating unsightly depressions or discoloration in the chair backs or armrests.
- Your furniture has been treated with a normal protective coating that does not detract from its natural appearance. If you require better/optimum protection for intensive daily use, we advise you to apply an extra layer of wood care product on the table tops before and during use. Your retailer stocks this product. Apply the product in accordance with the instructions.

Recommendations for chests of the Deaumain range

- If the chest doors are equipped with 'magnet catchers', they can usually be adjusted in order to facilitate opening the doors.
- We urgently recommend installing some type of 'fall' protection for all tall furniture for reasons of safety. This will prevent the furniture from tilting and/or falling forward. This can be done by installing 1 or 2 brackets above the furniture piece (available at any home improvement centre) by mounting them with a plug and screw of sufficient size onto the wall. Make sure to pre-drill the wood to prevent splitting.
- Standard weight indication (if needed): for equal weight (loads):
Maximum allowable weight for wood shelves is 20 kg.
Maximum allowable weight for glass shelves is 10 kg.

Maximum allowable weight per drawer is 10 kg.



Wood selection, knots and wind cracks are allowed. Variation in color is allowed within a certain range.



Wood selection, knots and wind cracks are allowed. Variation in color is allowed within a certain range.



Wood selection, knots and wind cracks are allowed. Variation in color is allowed within a certain range.



Wood selection, knots and wind cracks are allowed. Variation in color is allowed within a certain range.



Wood selection, knots and wind cracks are allowed. Variation in color is allowed within a certain range.



Wood selection, knots and wind cracks are allowed. Variation in color is allowed within a certain range.



Wood selection, knots and wind cracks are allowed. Variation in color is allowed within a certain range.



Wood selection, knots and wind cracks are allowed. Variation in color is allowed within a certain range.



Door panels are white lacquered and MDF veneer and are brushed.



Door panels are white lacquered and MDF veneer and are brushed.



Door panels are white lacquered and MDF veneer and are brushed.



Aging by brushing, all manually done therefore it can differ from showroom. Edges are rounded off. Moving edges are on purpose therefore not always equal.



Aging by brushing, all manually done therefore it can differ from showroom. Edges are rounded off. Moving edges are on purpose therefore not always equal.



Aging by brushing, all manually done therefore it can differ from showroom. Edges are rounded off. Moving edges are on purpose therefore not always equal.



Aging by brushing, all manually done therefore it can differ from showroom. Edges are rounded off. Moving edges are on purpose therefore not always equal.



Aging by brushing, all manually done therefore it can differ from showroom. Edges are rounded off. Moving edges are on purpose therefore not always equal.



This kind of aging on edges is on purpose, no reason for complaint.



This kind of aging on edges is on purpose, no reason for complaint.



Aging by brushing, all manually done therefore it can differ from showroom. Edges are rounded off. Moving edges are on purpose therefore not always equal.



Aging by brushing, all manually done therefore it can differ from showroom. Edges are rounded off. Moving edges are on purpose therefore not always equal.



Aging by brushing, all manually done therefore it can differ from showroom. Edges are rounded off. Moving edges are on purpose therefore not always equal.



This kind of aging on edges is on purpose, no reason for complaint.



Connection of shelf to frame, groove is made on purpose to make it look nice.



This kind of aging on edges is on purpose, no reason for complaint.



Variations in color might occur due to difference in hardness of wood and residue of patina in the grain.



Variations in color might occur due to difference in hardness of wood and residue of patina in the grain.



Variations in color might occur due to difference in hardness of wood and residue of patina in the grain.



Variations in color might occur due to difference in hardness of wood and residue of patina in the grain.



Variations in color might occur due to difference in hardness of wood and residue of patina in the grain.



Due to handcraft margins between drawers and frame are not always equal.



Due to handcraft margins between drawers and frame are not always equal. Level difference of doors can be leveled by adjusting the hinges.



Metal grip on doors



Due to handcraft margins between drawers and frame are not always equal.



Due to handcraft margins between drawers and frame are not always equal. Level difference of doors can be leveled by adjusting the hinges.



Due to woodworking space between parts can differ.
Woodworking occurs with difference in humidity of surroundings.



Due to woodworking space between parts can differ.
Woodworking occurs with difference in humidity of surroundings.



Magnet lock.



Magnet lock.



Metal magnet catcher and silicon damper to reduce noise and prevent damage to the lacquered part.



Adjustable kitchen hinge.



Adjustable shelf support.



Adjustable shelf support.



Metal drawer guide,
not soft closing.



Wheel, to be
mounted by
customer.



Wheel, to be mounted by customer.



Knots and cracks can be filled with matching paste.



Knots and cracks can be filled with matching paste.



Knots and cracks can be filled with matching paste.



Knots and cracks can be filled with matching paste.



Knots and cracks can be filled with matching paste.



Knots and cracks can be filled with matching paste.



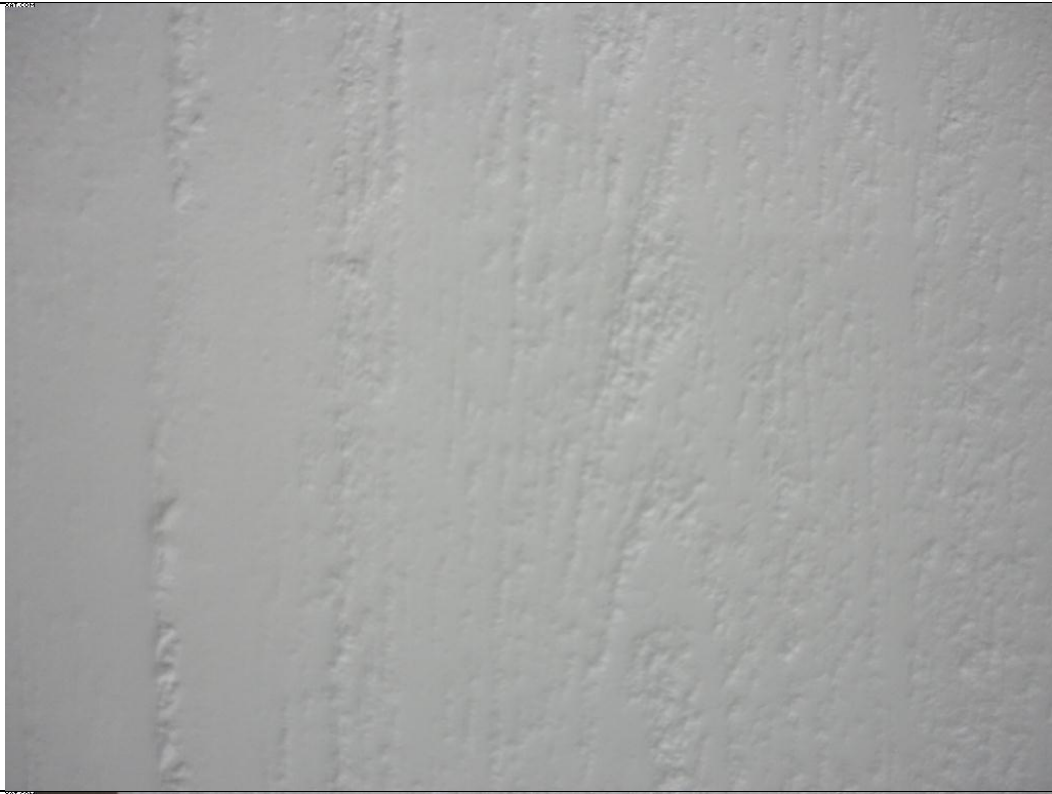
Knots and cracks can be filled with matching paste.



Knots and cracks can be filled with matching paste.



Knots and cracks can be filled with matching paste.



Veins have been sanded to create smooth look. Happened before finishing in order to prevent sharp edges.



Veins have been sanded to create smooth look. Happened before finishing in order to prevent sharp edges.



Veins have been sanded to create smooth look. Happened before finishing in order to prevent sharp edges.



Veins have been sanded to create smooth look. Happened before finishing in order to prevent sharp edges.



Veins have been sanded to create smooth look. Happened before finishing in order to prevent sharp edges.



Veins have been sanded to create smooth look. Happened before finishing in order to prevent sharp edges.



Veins have been sanded to create smooth look. Happened before finishing in order to prevent sharp edges.



Veins have been sanded to create smooth look. Happened before finishing in order to prevent sharp edges.



Veins have been sanded to create smooth look. Happened before finishing in order to prevent sharp edges.



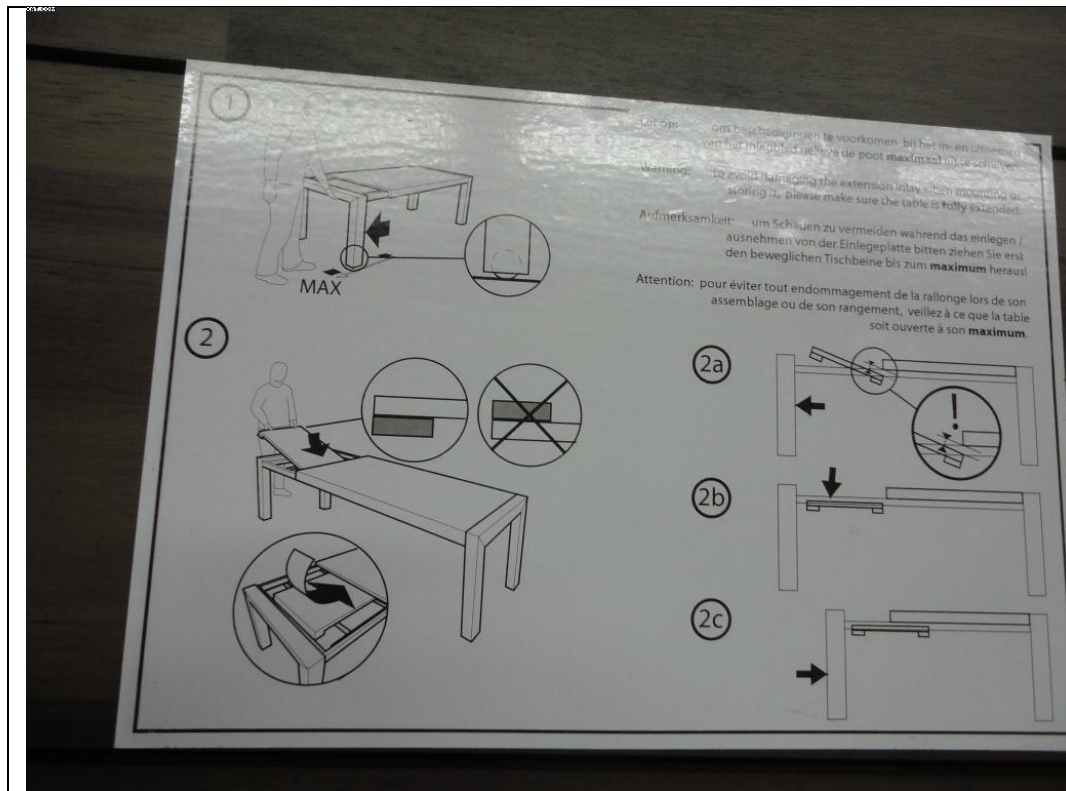
Because of moving parts extension tables are always less stable compared to fixed tables.



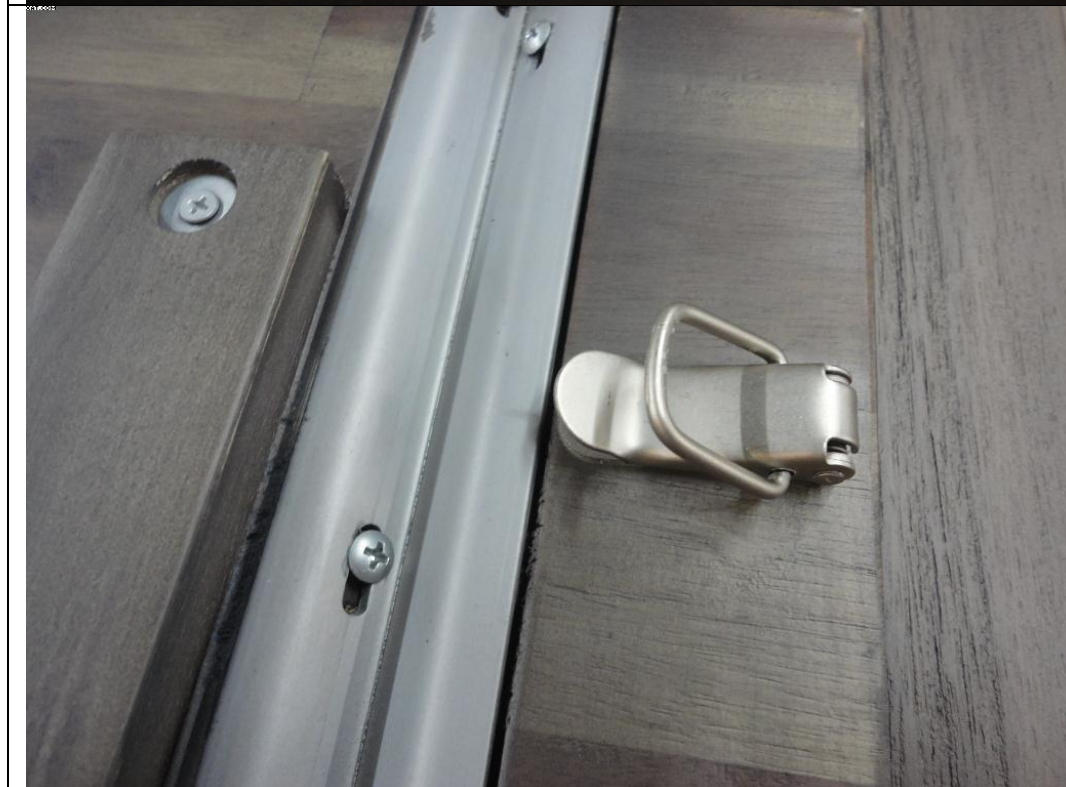
Because of moving parts extension tables are always less stable compared to fixed tables.



Stored inlay in extension table, make sure table is fully extended when inlay is stored or taken out.



Instructions for the use of the inlay, need to be followed in order to prevent damage.



Lock for fixing inlay to table.



Hinge to close skirt of inlay.



Lock for fixing skirt of inlay when stored.



Positioning dowel.



Bolts for fixing frame to movable leg.



Sliding mechanism of extension table.



Stopper and frame for storage of inlay. Its covered with felt to avoid damage.



Anti bending iron to prevent inlay from bending.



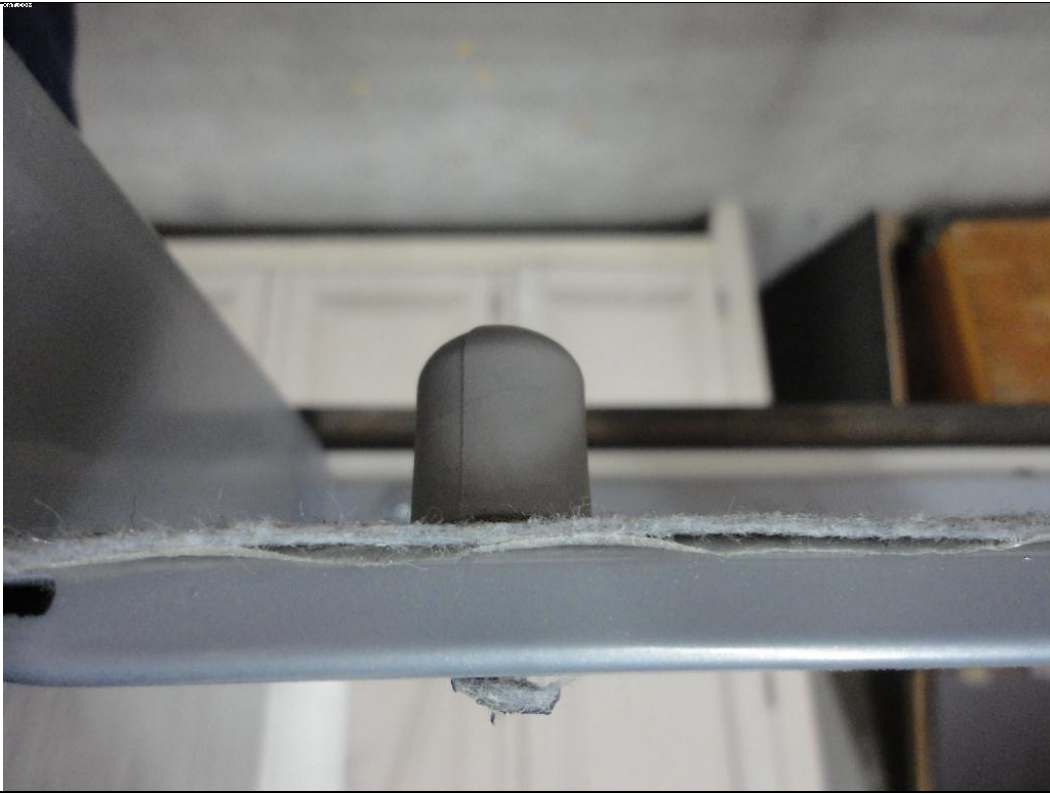
Sliding system for extension table.



Rubber piece underneath leg to prevent sliding of the table.



Inserted wheel to make it easier to open and close the table.



Stopper to keep inlay
in correct position.